

Flowers—Dec.-Feb. Common near wet places.

Munshi 3.

ALISMACEAE

Tenagocharia latifolia, (D. Don). Butchen. Adh. 1868. *Butomus latifolius*, D. Don,

Prodr. 1825. *Butomopsis lanceolata*, Kunth, Enum. 1841, F.B.I. 6 : 562, 1893.

Marsh plant leaves elliptic-lanceolate, acute at both ends; petioles dilated at the base; pedicels long, petals white.

Flowers—Nov.-Jan. Not common. *Munshi* 4.

INSTITUTE OF SCIENCE,
NAGPUR,
November 2, 1977.

S. A. PARADKAR
S. K. MUNSHI

32. NOTES ON TWO INTERESTING SEDGES FROM GUJARAT STATE, INDIA

(With a plate)

After critically going through all the literature available to us on the flora of western India we find that the following two sedges have not been reported from any locality in Gujarat and probably Maharashtra State.

Lipocarpa argentea R. Br. in Tuckey, Cong 477, 1818; C. B. Clarke in Fl. Brit. Ind. 6 : 667, 1894; Fischer in Fl. Madras (reprinted ed.) 3 : 1158, 1957; Haines, Bot. Bih. & Oris. 3 : 973, 1961 (reprinted ed.); Prain, Beng. Pl. 2 : 871, 1963 (reprinted ed.).

A glabrous erect herb, 40-60 cm tall; rhizome 0. Stems tufted, obtusely triangular, smooth. Leaves all basal, upto 25 cm long. Spikelets 3-8, in a terminal capitate head, white or straw coloured. Bracts 3, 0.7-8.4 mm in length. Glumes hyaline dotted and streaked with red-brown tinge, spirally arranged, obovate, apex obtusely triangular, incurved, 2-2.5 mm long deciduous from the base of persistent rhachilla marked by lozenge-shaped scars. Squamellae 2, 1.00-1.06 mm long, hyaline with a purple tinge, elliptic, inner completely im-

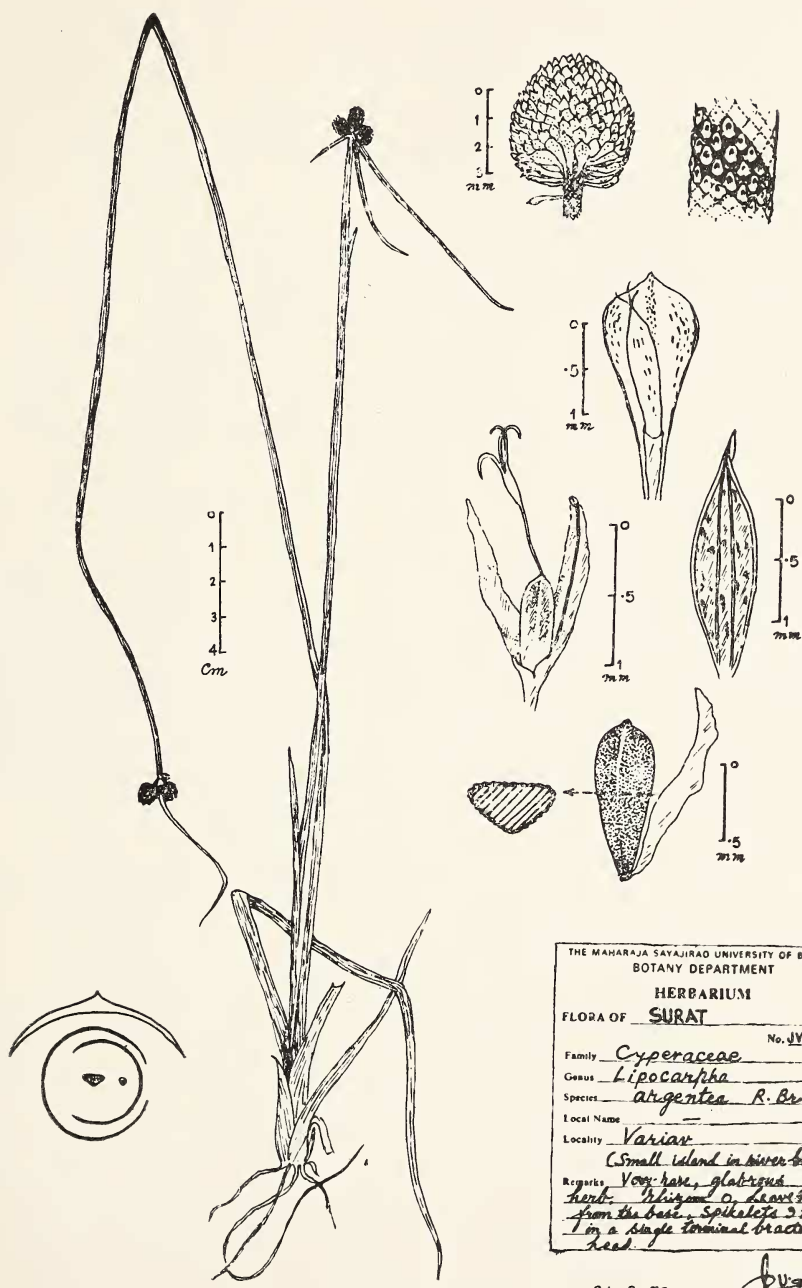
bricated by outer, each marked by four vertical prominent ribs. Stamen 1, anther very small, filament closely appressed to the inner squamella. Style 0.5 mm long, slender. stigmas 3, as long as the style. Nut small, 0.7-1.0 mm long, oblong or ovoid, Plano-convex, brown, usually minutely punctate.

The plants were collected from alluvial sandy soil on a small island in the bed of river Tapti near Variav about 9 km northwest of Surat. The plants were associated with species of *Cyperus* and *Fimbristylis*.

Flowering and Fruiting—August-September. JVJ 211 herbarium, The M. S. University of Baroda (BARO).

Distribution: Western Himalayas upto 6000 ft, Assam, Karnataka, Wynaad, Nilgiri and Palni Hills 3000-7000 ft, Sri Lanka, Singapore. Tropical and sub-tropical old world.

The Sedge in its general appearance resembles *Cyperus triceps* (Rottb.) Endl. (*Kyllinga triceps* Rottb.). This fact has also been emphasized by Fischer (loc. cit.). It is therefore, necessary to see all the available her-



THE MAHARAJA SAYAJIRAO UNIVERSITY OF BARODA
 BOTANY DEPARTMENT
 HERBARIUM
 FLORA OF SURAT
 No. 441 211
 Family Cyperaceae
 Genus Lipocarpa
 Species argentea R. Br.
 Local Name
 Locality Varisar
 (Small island in river bed)
 Remarks Very rare, glabrous
herb. Rhizome 0, leaves
from the base, spikelets 3 to 6
in a single terminal bracteate
head.

Date: 31-8-72
 Collected by *J. V. Joshi*

Lipocarpa argentea R. Br.